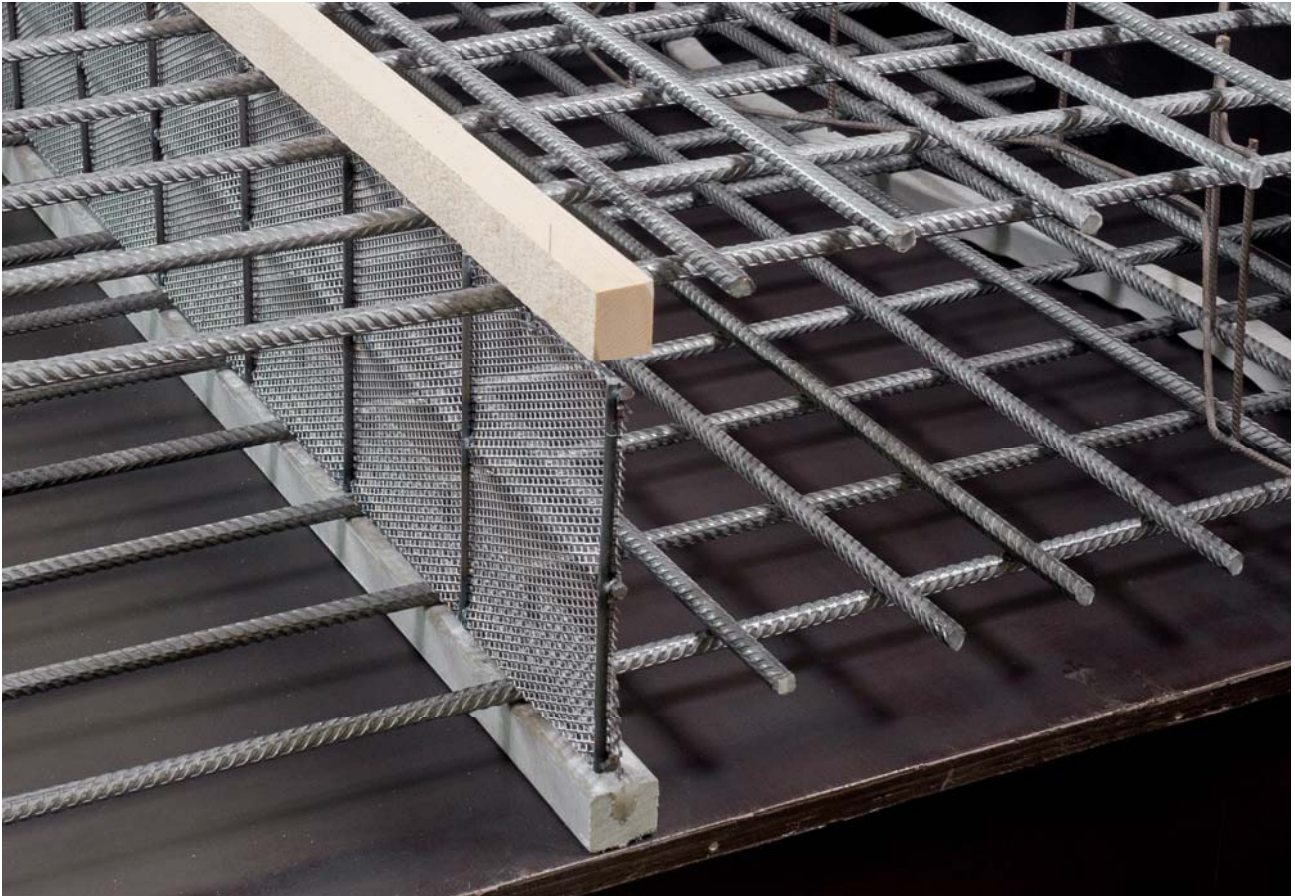


Stremaform® formwork elements are used as lost formwork in floor slabs, ceilings and walls. The expanded metal that is welded between the bars of a specially designed reinforcing steel mesh gives rise to a rough surface. The reinforcement can be continued without a break into the second concrete pour.



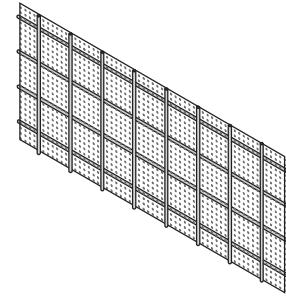
## Stremaform®

Stremaform® flat is used for medium-sized structural components, installed between the upper and lower reinforcement layers.

Stremaform® in the concrete gives a rough surface that satisfies the requirements of an indented joint according to DIN 1045-1 and/or Eurocode 2 and does not need scabbling.

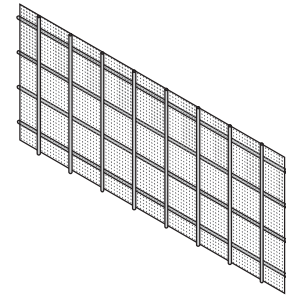
A metal water stop or a pvc/rubber waterbar support cage can be integrated in our factory if required.

Delivery is made precisely in accordance with your layout specifications.



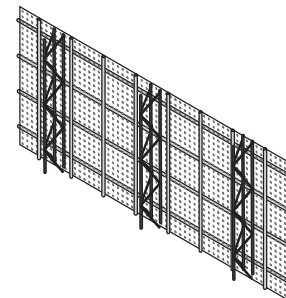
## Stremaform® for self compacting concrete (SCC)

Stremaform® SCC flat material features a fine-mesh expanded metal with flow-resistant characteristics for use with self-compacting concrete. It can be combined with a factory-fitted integrated metal waterstop, integrated waterbar cage or factory-fitted stiffening. It is installed between the upper and lower reinforcement layers. Delivery is made precisely in accordance with your layout specifications.



## Stremaform® Strong

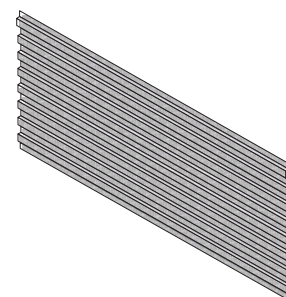
Stremaform® Strong with factory-fitted stiffening made of lattice beams is intended for larger structural components. Here, too, a water stop or waterbar cage can be integrated at the factory if required. Delivery is made precisely in accordance with your layout specifications.



## Stremaboard

Stremaboard consists of a profiled, lightweight expanded metal:

The profile satisfies requirements to DIN EN 1992-1-1, so that working joints produced with Stremaboard are classified as indented joints.



## The following documents are kept available on our website for you to download:

**Stremaform® elements in working joints version to DIN EN 1992-1-1**

Experts report issued by Prof. Dr.-Ing.  
Harald Sipple

**Users' declaration for the "Stremaform® system – formwork elements for working joints" in walls, base slabs, permanent edging formwork DB Netz AG, Frankfurt"**

DB Netz AG, Frankfurt

**Stremaflex® – General approval according to the guidelines of the construction supervising authorities**

Issued by the Material Testing Institute  
at the Technical University of Munich